



PRESTIGE

La Casa

Introducing Prestige.



Strategically located in Accra's most exclusive settings, within the enclave of Kotoka International Airport, Prestige is the ultimate location for the city's cosmopolitan elite. From this exclusive address in the capital, residents are



invited to experience all the benefits of life in a select community, whose aspirations for the ultimate in luxury living are fulfilled through an array of amenities and impeccably designed residential space.



Because

Location is everything...

Nestled in a prime location within Kotoka International Airport's enclave, Prestige offers the ideal setting for both homeowners and investors. For those seeking a luxurious lifestyle, the community's strategic location ensures easy access to the city's finest restaurants, shopping malls and entertainment hubs, as well as being near to premium schools and to the city's most renowned health care providers. For the investor, this location proves equally tantalizing, with its potential for long-term high demand due to its proximity to the airport and major attractions.





PRESTIGE



KOTOKA INTERNATIONAL AIRPORT



MARINA MALL



ACCRA MALL



MAXMART 37



PALACE MALL



ACCRA POLO CLUB



SANTOKU



KŌZO



EL PADRINO LOUNGE



SKYBAR 25



SPLASH ACCRA



MARIOTT HOTEL



HOLIDAY INN ACCRA AIRPORT



IBIS STYLES ACCRA AIRPORT



LANCASTER ACCRA



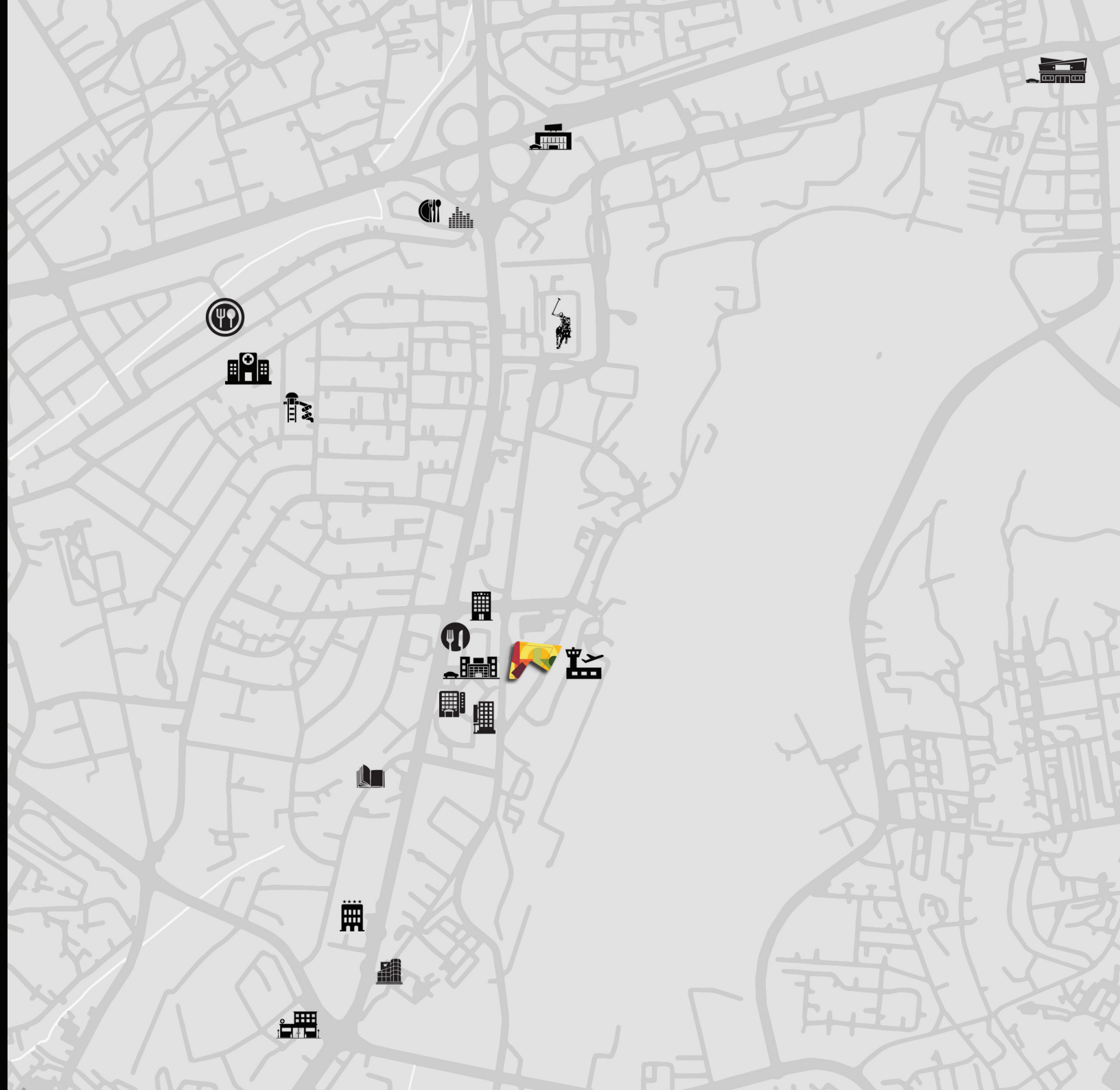
ALLIANCE FRANÇAISE D'ACCRA



NYAHO MEDICAL CENTRE



37 MILITARY HOSPITAL



...And your time is valuable

As a member of the Prestige community, what can you do in **1** minute?



In **1** Minute, you can catch your plane



In **1** Minute, you can take the family out



In **1** Minute, you can arrive at work



In **1** Minute, you can get back home





Because You move in select circles

An address at Prestige is not only a statement of **distinction** and elegance, it is an invitation to live among and connect with a vibrant community of like-minded individuals. From your home environment, you'll have the opportunity to meet and form lasting connections with your neighbours - meaning those who share your taste for the finer things in life.





Because

Attention to detail matters

The luxurious lifestyle at Prestige begins from the moment you step into the elegant lobby, where attentive concierge services ensure that your every personal need is met, complemented by the business centre and its array of services. Beyond the lobby, residents enjoy a wealth of onsite facilities, such as the state-of-the-art gym and rejuvenating spa, perfect for early morning power workouts or evenings spent unwinding after a long day. Additionally, well-appointed meeting rooms provide the perfect space for hosting gatherings.

Because
**your environment
matters.**

A life in harmony with nature and an environment that promotes your wellbeing... this is what Prestige promises its residents through meticulous landscaping. The surrounding greenery has been developed to add value to your lifestyle, where day-to-day life is elevated by picturesque views that nurture a sense of peacefulness and calm.





Because
**Family comes
first**

As an added delight, Prestige is proud to introduce “Wonderland,” an onsite theme park that promises a magical experience for young and old alike. This world of enchantment, thrilling rides, and unforgettable moments is within walking distance of Prestige homes, offering families the ultimate convenience of easy access to leisure time filled with wonder and joy.



Because
**You thrive on
luxury**

At Prestige, we believe every space delivers an exceptional home. Whether you prefer the compact convenience of a studio, the spaciousness of a 1- or 2-bedroom apartment, or the crowning view from the Royal Penthouses, each home has been thoughtfully designed with impeccable attention to detail, reflecting the epitome of luxury living.



Because
You expect
excellence

At Prestige, we take pride in our exceptional team of stakeholders, who contribute their expertise to create a living experience like no other. From visionary architects to skilled craftsmen, each stakeholder is committed to bringing the vision of Prestige to life.



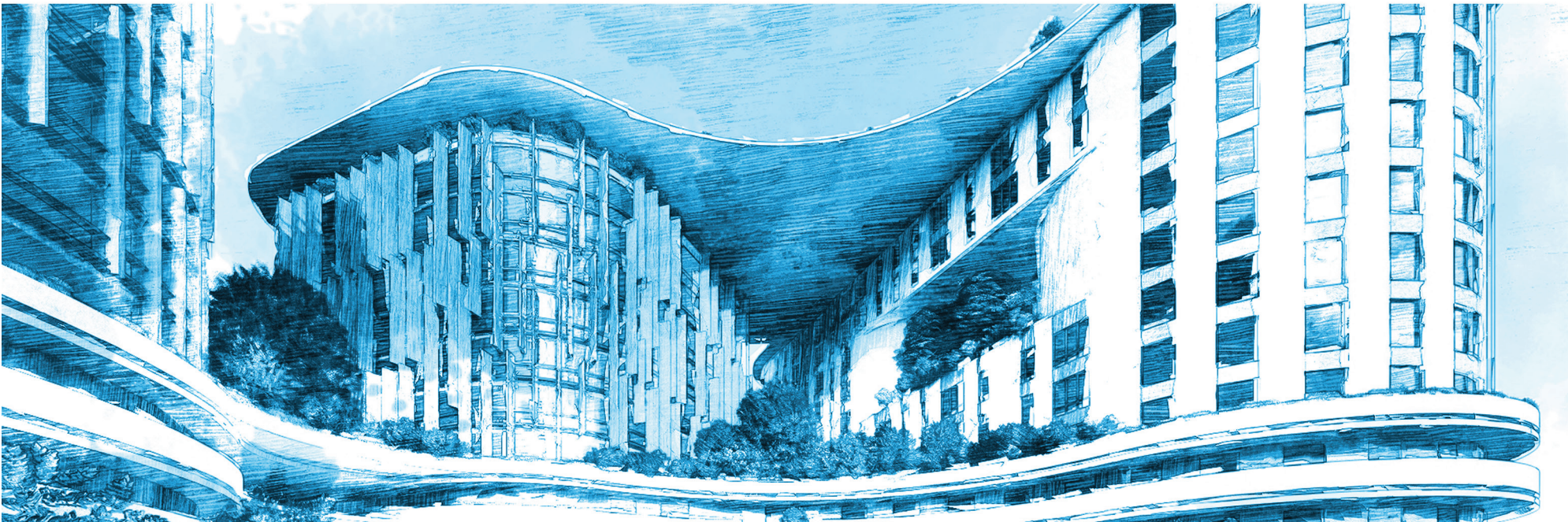


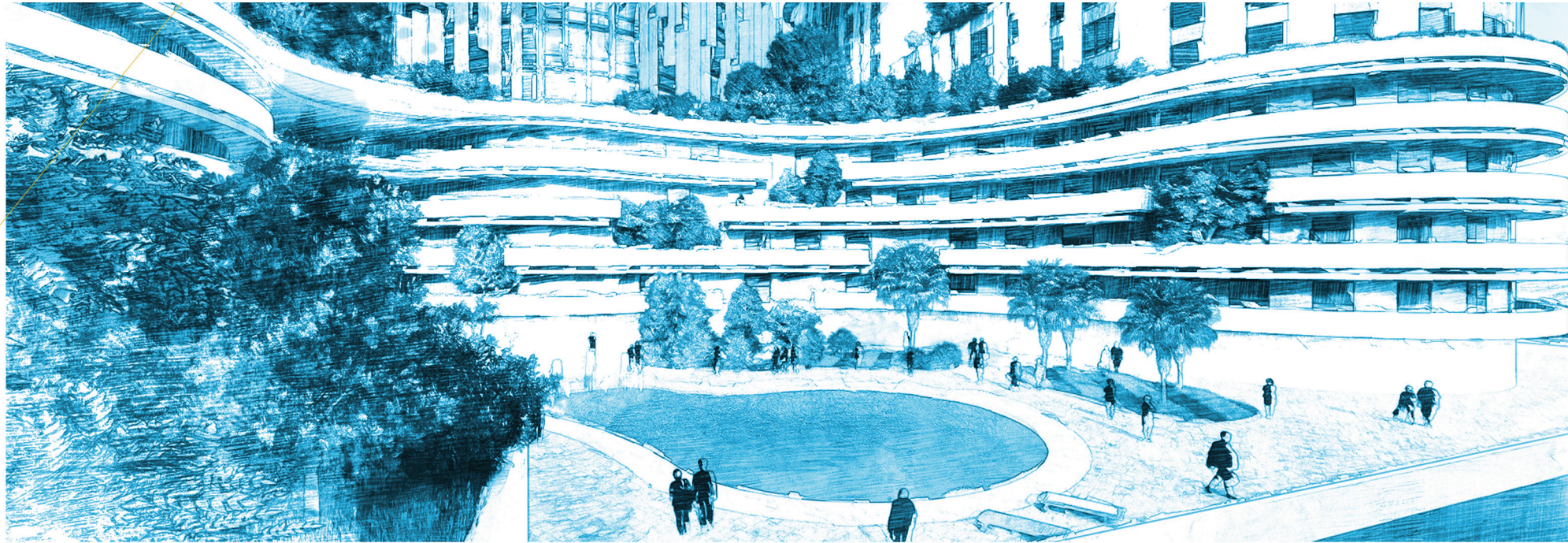
The Developer:

i2 Development Ghana Ltd.

As part of the i2 Investments group of companies, i2 Development Ghana Ltd. is led by industry professionals and backed by their track record of expertise in enhancing quality of life through a visionary and steadfast approach to business.

In line with i2 Investments' mission to create long-term value, every i2 Development project is meticulously planned and executed to ensure that it is delivered on time to exacting quality standards and that it exceeds expectations.





Whether for residential, commercial or mixed use, i2 Development believes that the selection of a prime and sought-after location is an essential starting point. From here, planning and management are key to ensure that construction adheres to quality standards and meets customer expectations, always with a respect for the environment. As such, i2 Development takes exceptional

care in its choice of state-of-the-art materials and finishings, complying with international standards and green codes. The aspirations of i2 Development's diverse clientele are also a priority, with designs and floor plans customizable to meet individual needs, and a commitment made to deliver optimal value for money.

General Contractor: **Micheletti & Co. Ltd.**

Micheletti & Co. Ltd. is one of Ghana's leading Civil Engineering and Building Construction Companies in operation for over 50 years. Throughout its existence, Micheletti has been involved in planning, designing and building projects, providing its clients with a comprehensive service throughout the entire life cycle of any project. Micheletti & Co. Ltd. was founded in Ghana in 1955 by F. Micheletti, an Italian entrepreneur. Through exceptional performance over the years, the company obtained the highest certifications.

In 2004, Micheletti & Co. Limited was reborn under new shareholders and management. As a result of the new ownership, the company is now part of a broader group of companies engaged in Civil Engineering, Construction and Construction Products, and Estate Development. This strategic alliance offers significant benefits to both the company and potential clients. Throughout the years, the name Micheletti has remained synonymous with unparalleled quality in residential, commercial, and government projects.



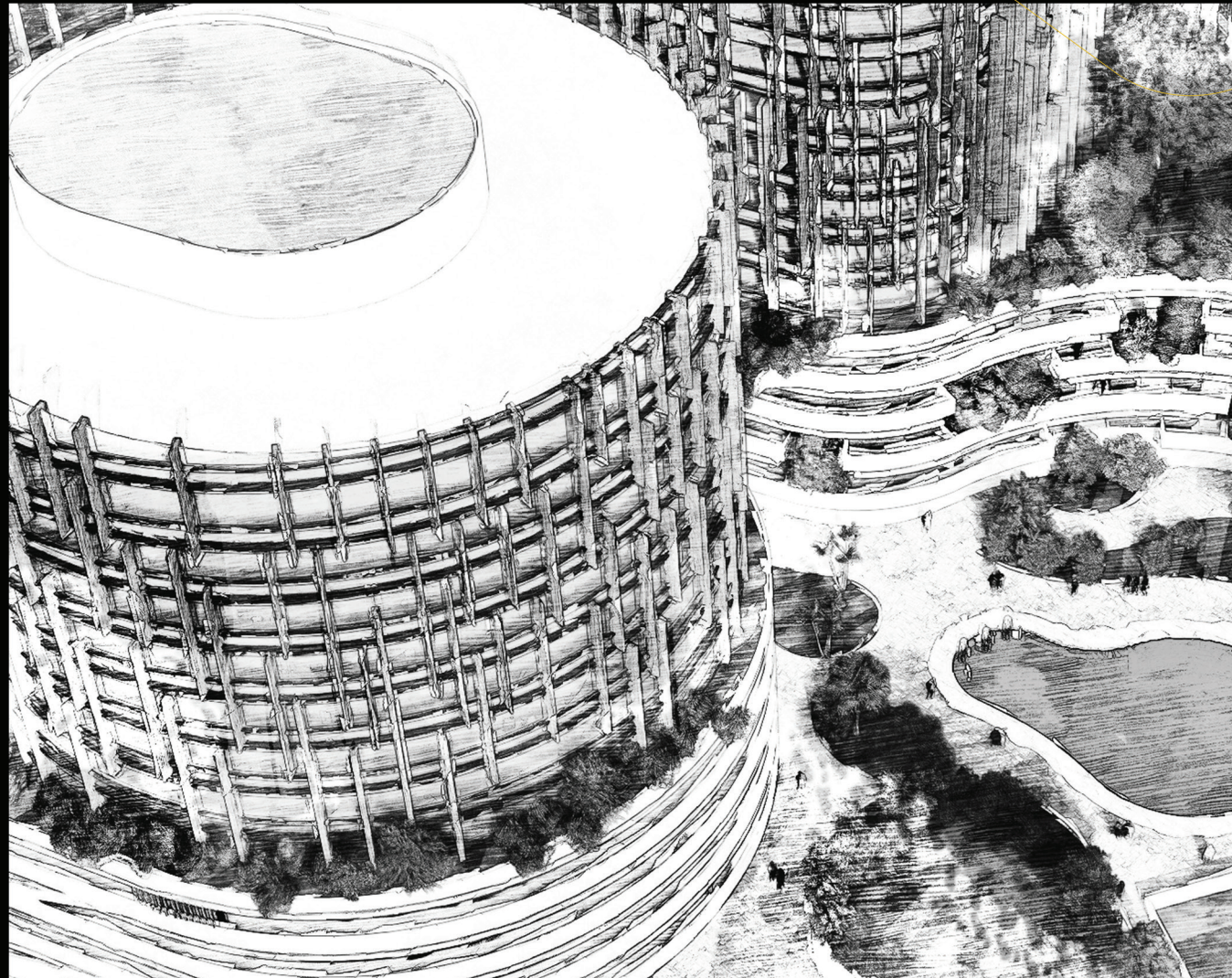


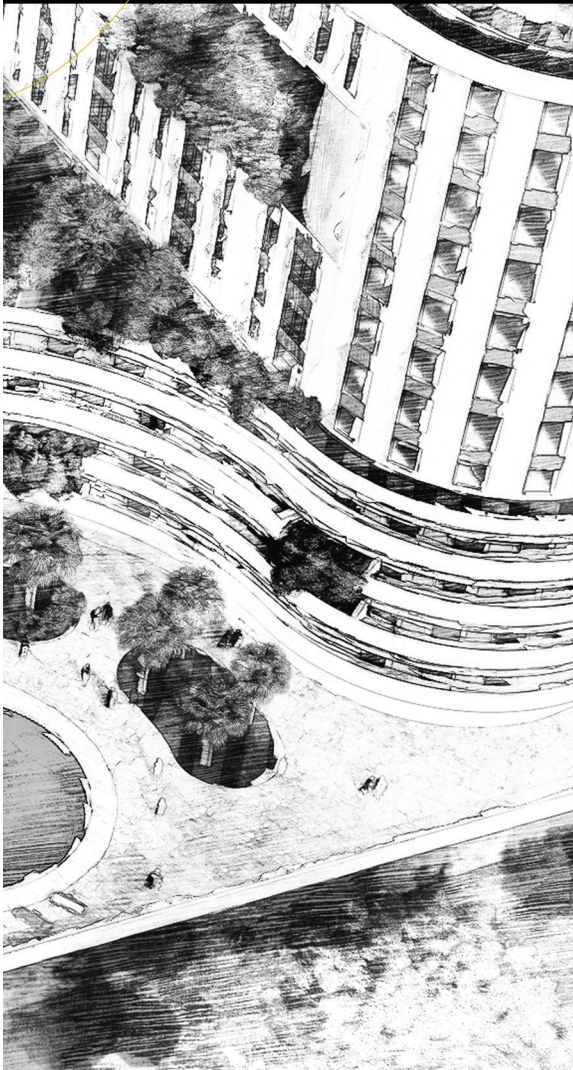
Lead Consultant

KEY Architectural Group

With an experience of over 22 years in prestigious and diversified designs and construction projects, KEY Architectural Group was founded in the belief that architecture itself is a human, cultural and futuristic activity.

Upon its expansion to Ghana, KEY Architectural Group has been providing professional design, supervision and/or management services, with a proven approach to successful residential, commercial and administrative projects, in the scope of Architectural and Engineering Design, Consultation and Contracting.





KEY thrives to grow on the pillars of creativity, innovation, excellence, and professionalism, and ventures to lay the groundwork for sustainable and long-lasting relationships it nurtures with its clientele.

Today, KEY takes pride in establishing a name for artistic flair, distinction and integrity. KEY has earned a reputation for a dedicated service, conscientious processing, a vanguard approach, an accurate lead time, and a perfect finishing as promised.



ARCHITECTURAL COMPANY LTD.

KEY

Preferred Partners:



H&M Manufacturing is a wholly owned Ghanaian enterprise, specializing in furniture manufacturing, finishing solutions and interior décor. With over 12 years of experience, H&M Manufacturing is one of the most experienced furniture manufacturing companies in Ghana.

H&M owns and operates a state of the art factory located in Accra, where the company manufactures modern and innovative interior finishing works such as wardrobes, beds, TV units, wall cladding, kitchens, center tables, sofa's, office desks, complete office set ups and many more.



Casa TRASACCO

Part of the prestigious Trasacco group of companies, Casa Trasacco is a one-stop destination for premium home and office furnishings. From luxury kitchens to home appliances and children's bedroom furniture to bathroom furniture and design furniture, to name but a few, Casa Trasacco is full of treasures and decoration ideas that will gladden the heart of interior decorating enthusiasts; all under one roof, all surprisingly affordable.

Moreover, as the Ghanaian agent of various world-leading home and office design brands, Casa Trasacco brings the work of leading designers to Ghana.



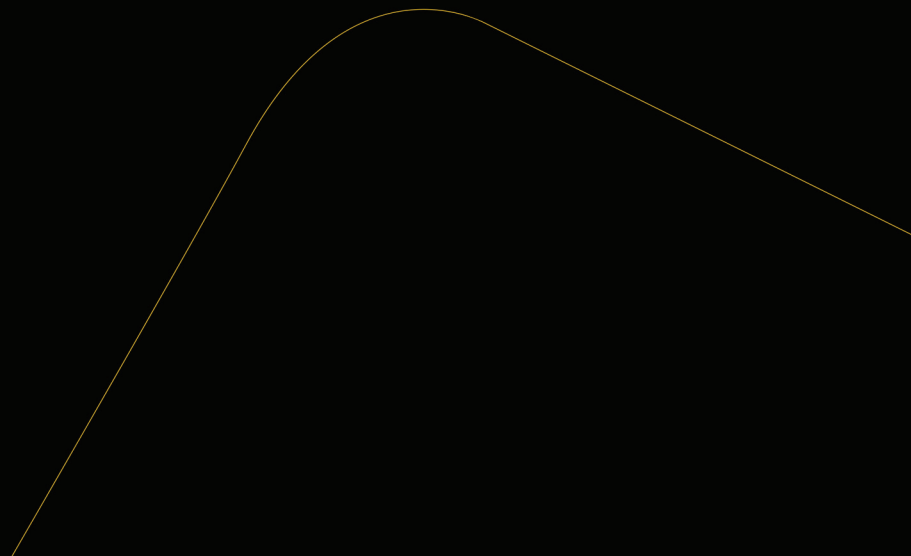
BEPCO is a leading company specialized in providing innovative structural solutions with a strong emphasis on post-tensioned concrete. The company's team of experts is dedicated to delivering excellence in engineering and construction, ensuring that every project it undertakes meets the highest standards.



BEPCO takes pride in pushing the boundaries of innovation in the industry, focusing on post-tensioned concrete which allows to create structures that are not only durable and robust but also cost-effective and sustainable. From bridges to buildings

and other infrastructure projects, BEPCO is your reliable partner for cutting-edge solutions that stand the test of time. BEPCO's commitment to engineering excellence drives it to tailor each solution to meet the unique needs of the clients.

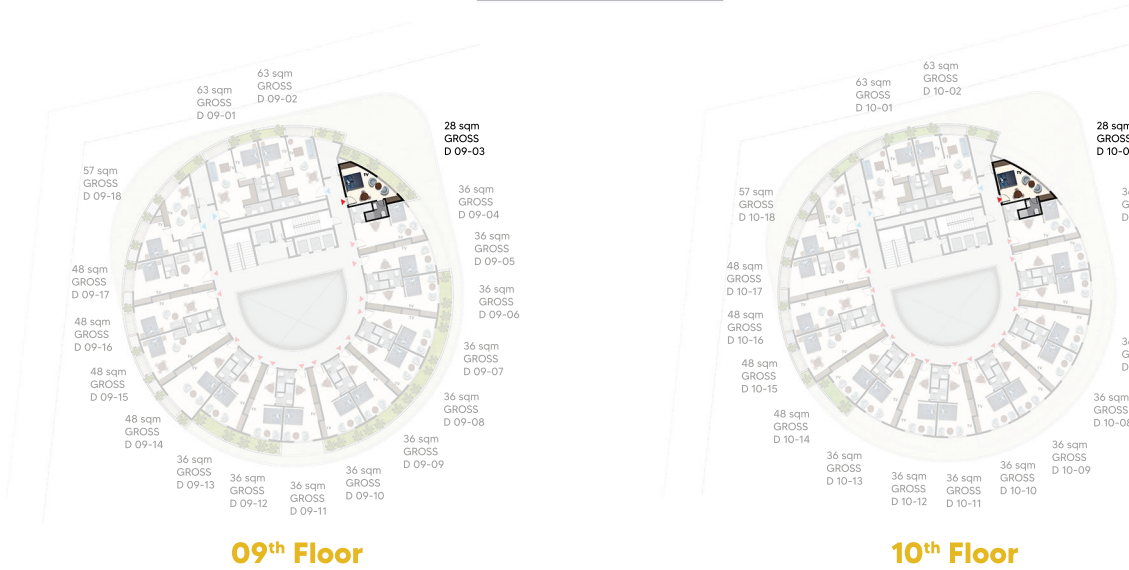
Floor Plans.



Studio Apartments

Immerse yourself in the contemporary luxury of our studio apartments, where every inch of space is ingeniously crafted to maximize comfort and functionality for your ideal lifestyle aspirations.

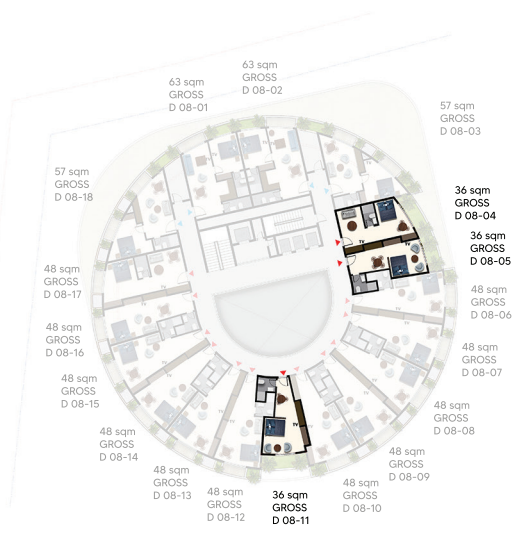
STUDIO APARTMENT 28 SQM GROSS
Total apartments: 02 Units



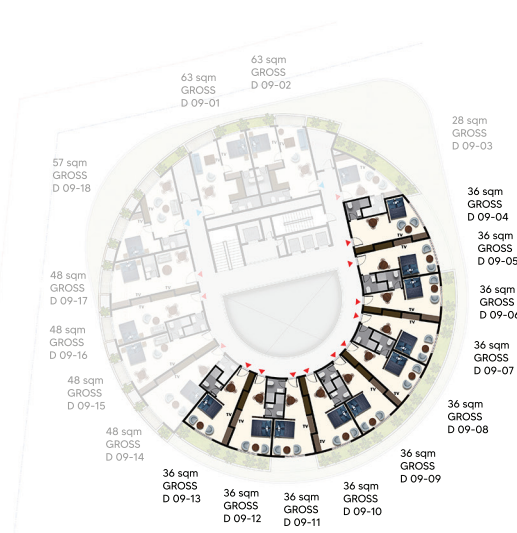
09th Floor

10th Floor

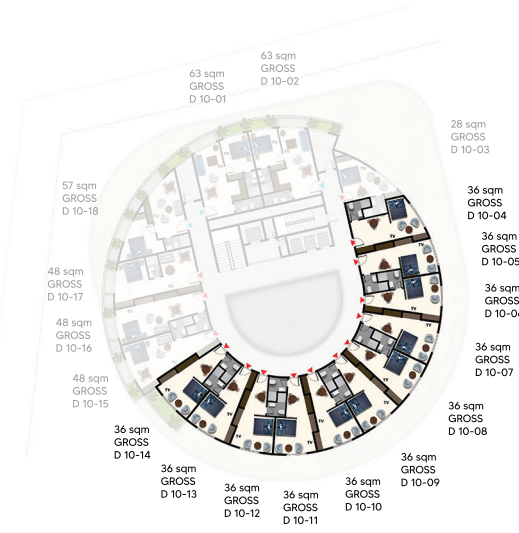
STUDIO APARTMENT 36 SQM GROSS
Total apartments: 24 Units



08th Floor

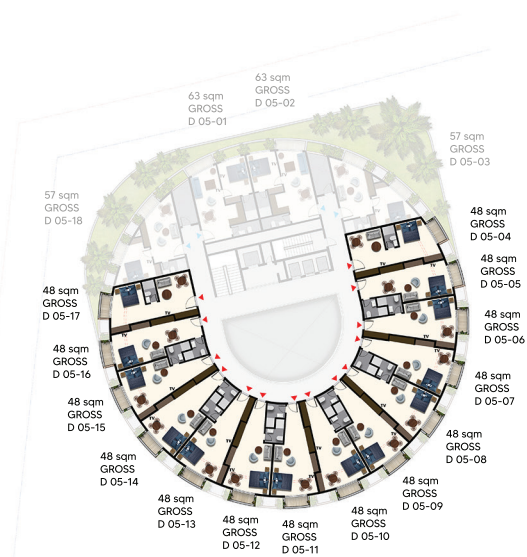


09th Floor

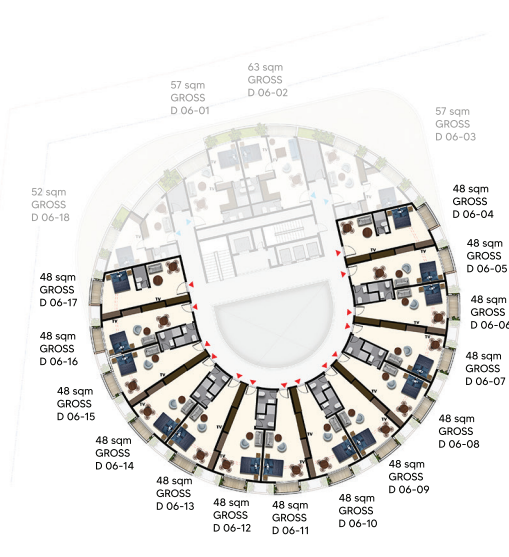


10th Floor

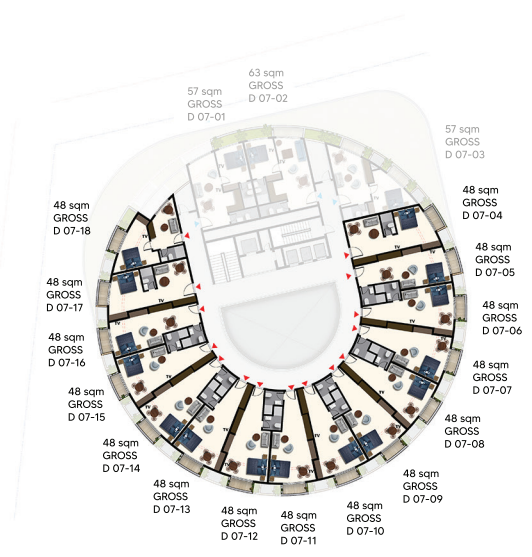
STUDIO APARTMENT 48 SQM GROSS
Total apartments: 61 Units



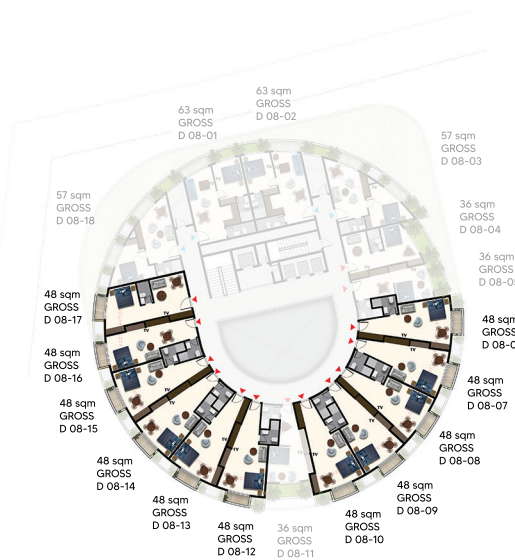
05th Floor



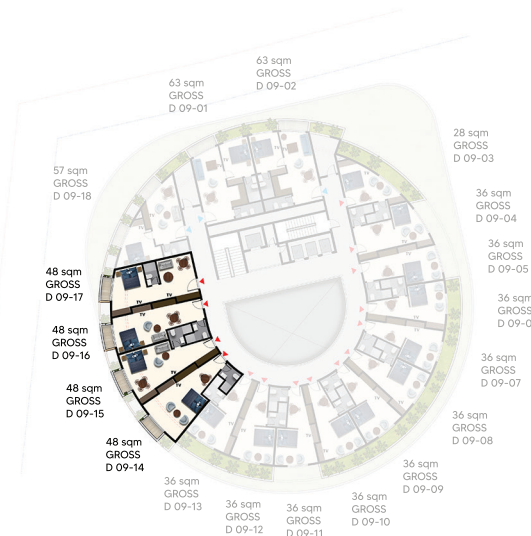
06th Floor



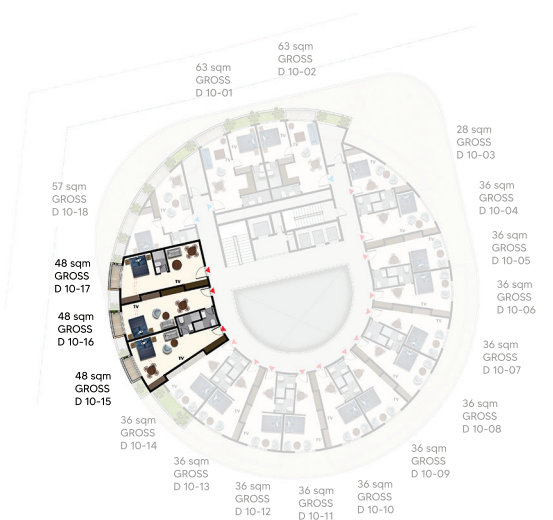
07th Floor



08th Floor



09th Floor



10th Floor

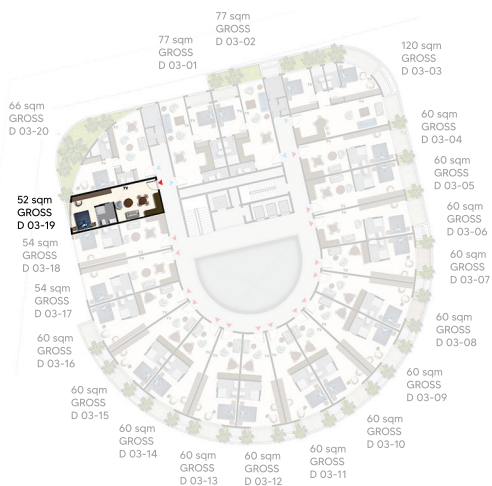


1-Bedroom Apartments

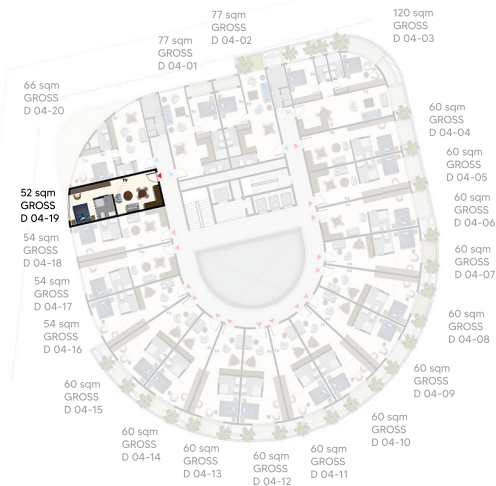
Experience the epitome of sophistication in our 1-bedroom apartments, where the art of luxurious living is redefined, inviting you to envision your dream residence.



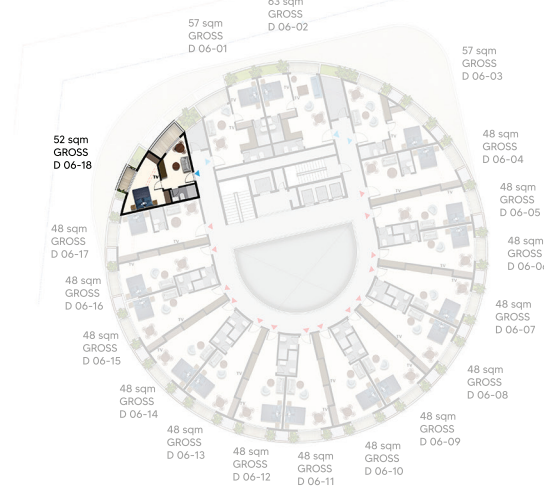
1-BEDROOM APARTMENT 52 SQM GROSS
Total apartments: 03 Units



03rd Floor



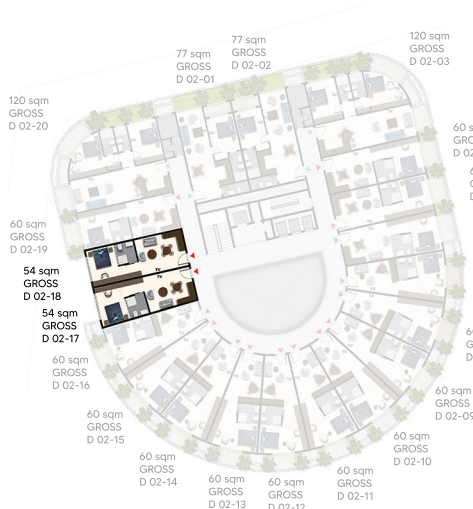
04th Floor



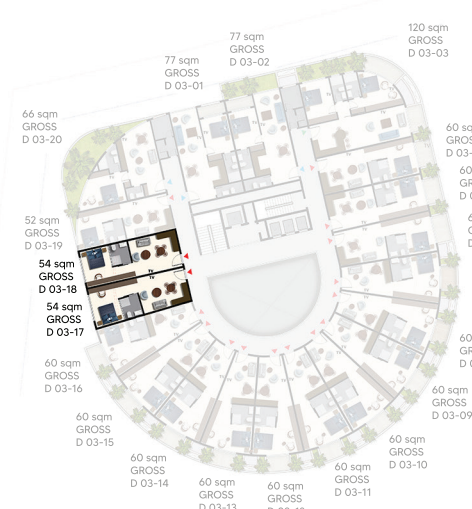
06th Floor

1-BEDROOM APARTMENT 54 SQM GROSS

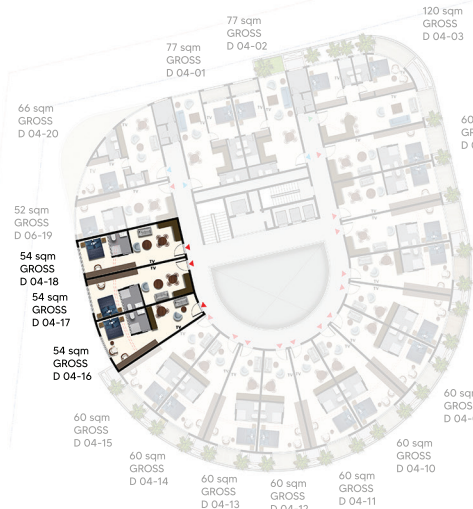
Total apartments: 07 Units



02nd Floor

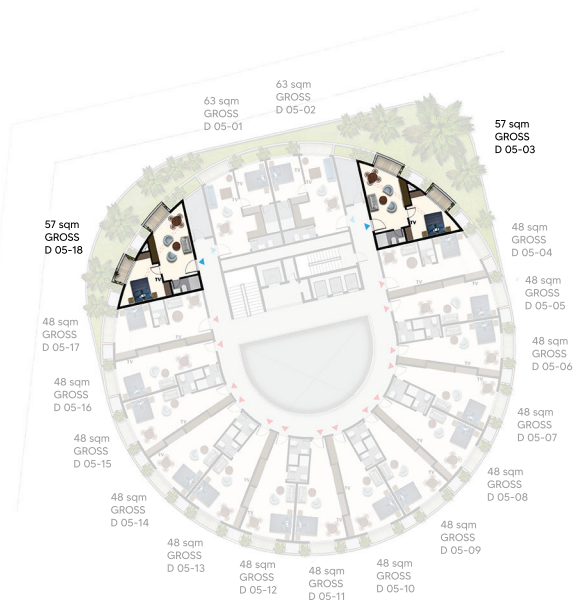


03rd Floor

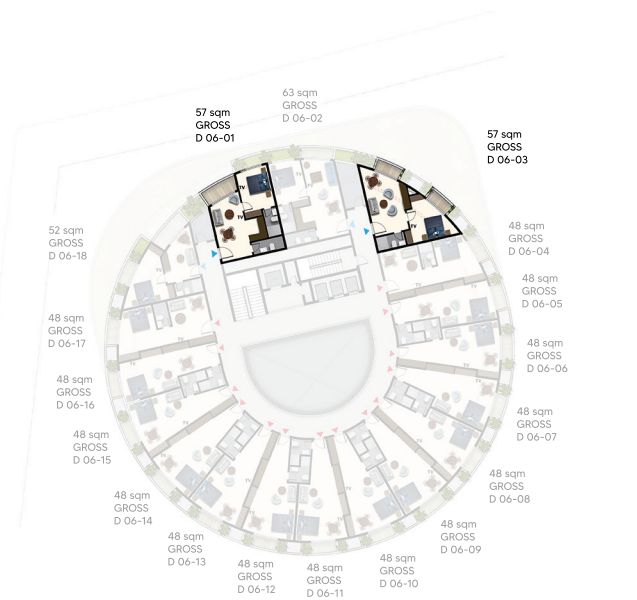


04th Floor

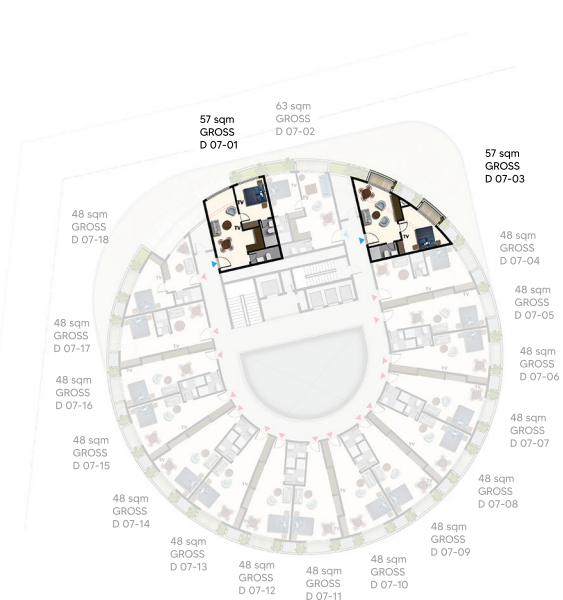
1-BEDROOM APARTMENT 57 SQM GROSS
Total apartments: 10 Units



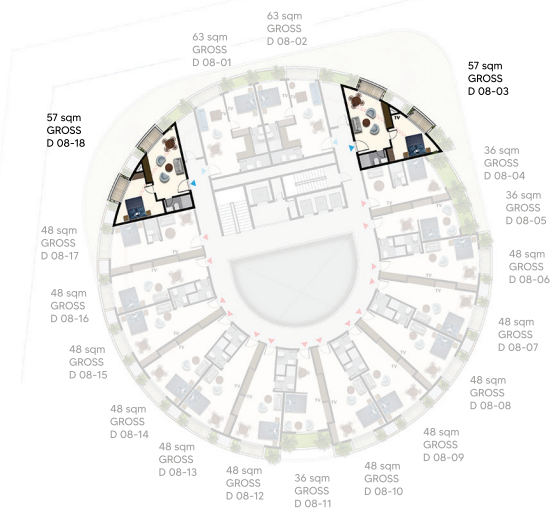
05th Floor



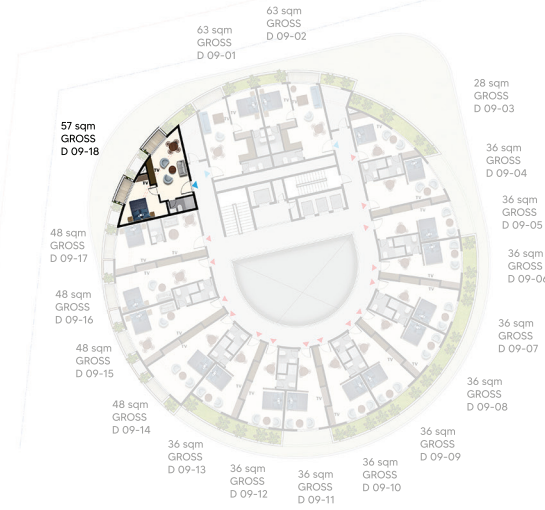
06th Floor



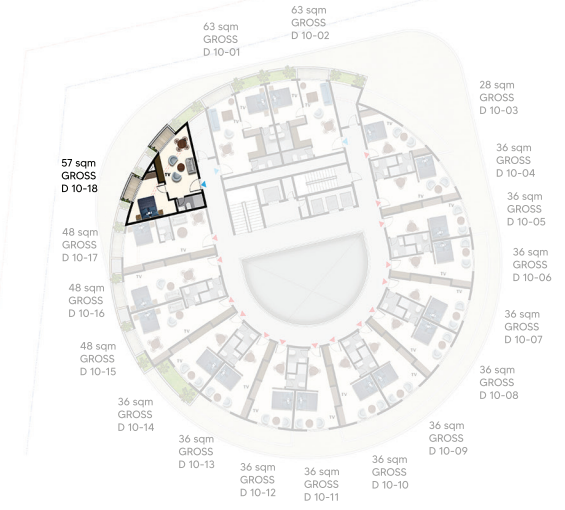
07th Floor



08th Floor



09th Floor



10th Floor

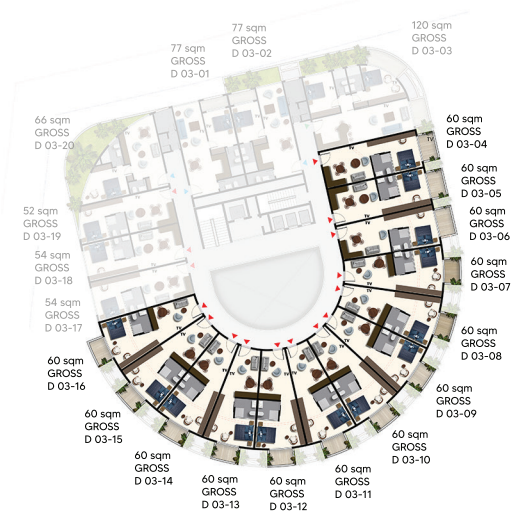
1-BEDROOM APARTMENT 60 SQM GROSS
Total apartments: 55 Units



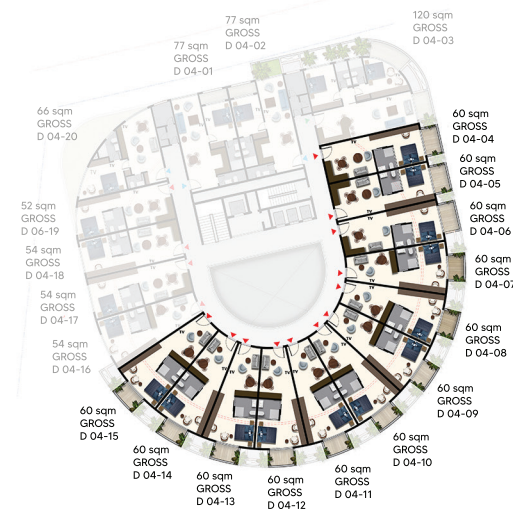
01st Floor



02nd Floor

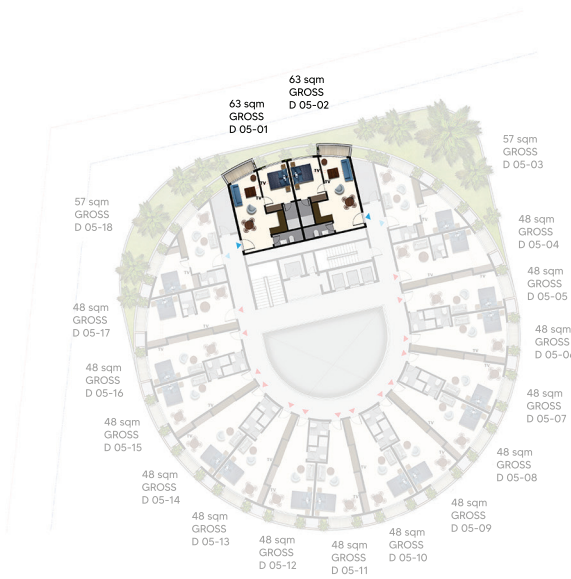


03rd Floor

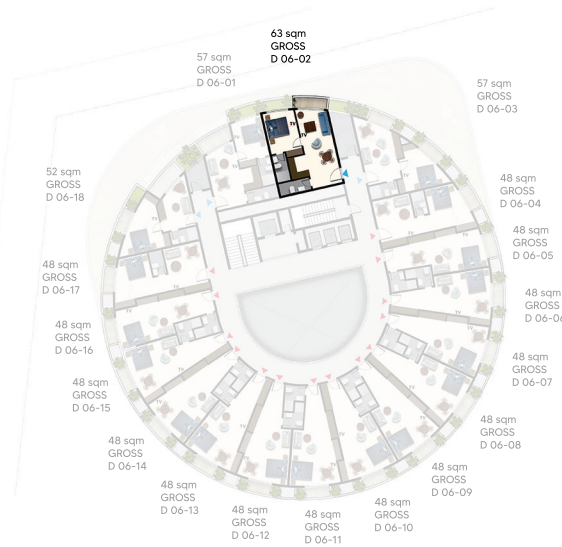


04th Floor

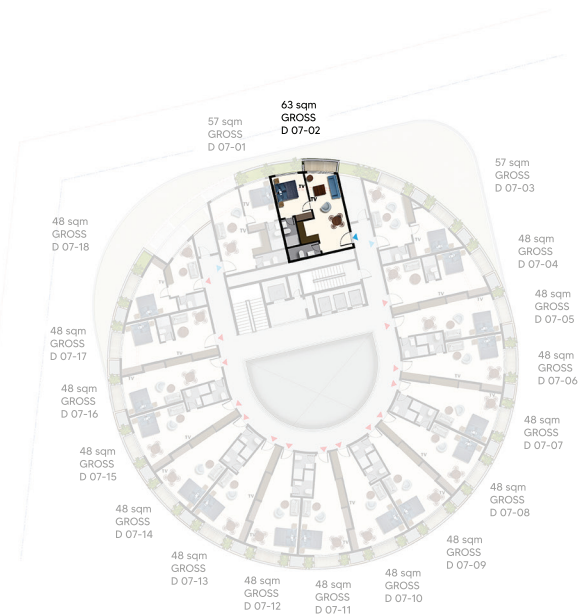
1-BEDROOM APARTMENT 63 SQM GROSS
Total apartments: 10 Units



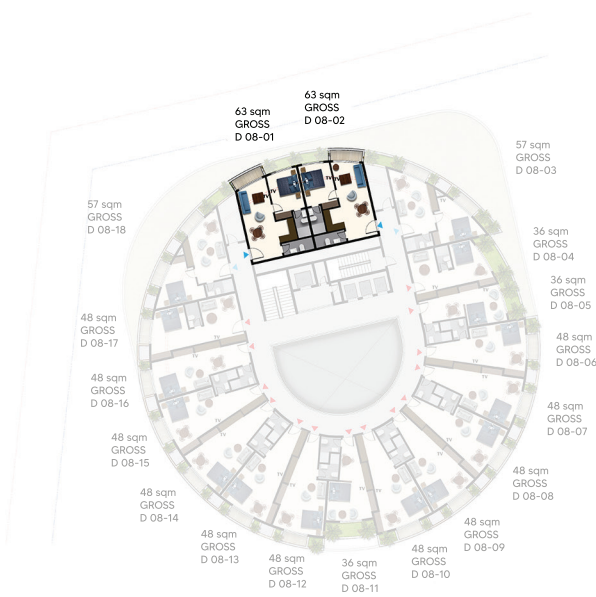
05th Floor



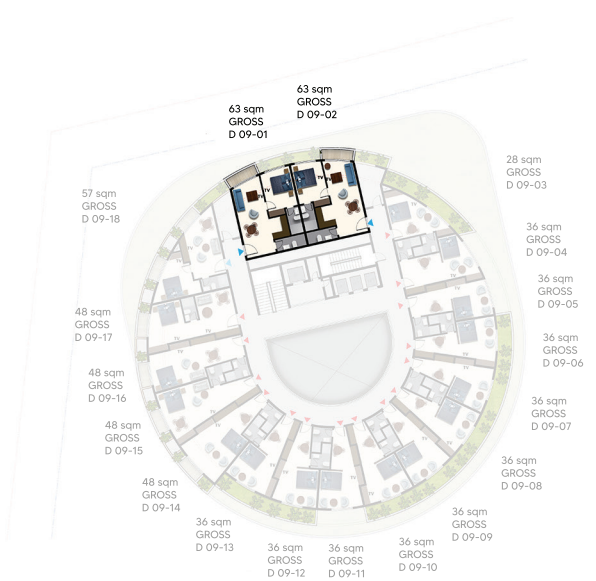
06th Floor



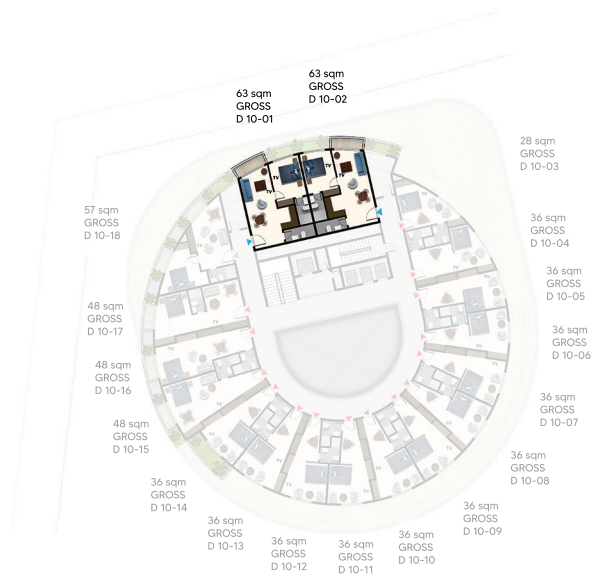
07th Floor



08th Floor



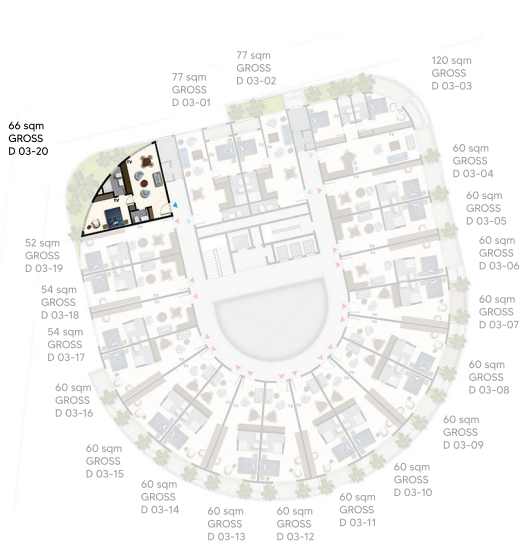
09th Floor



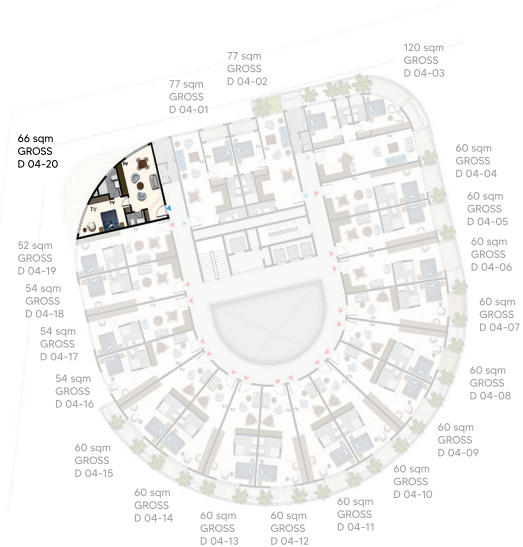
10th Floor

1-BEDROOM APARTMENT 66 SQM GROSS

Total apartments: 02 Units

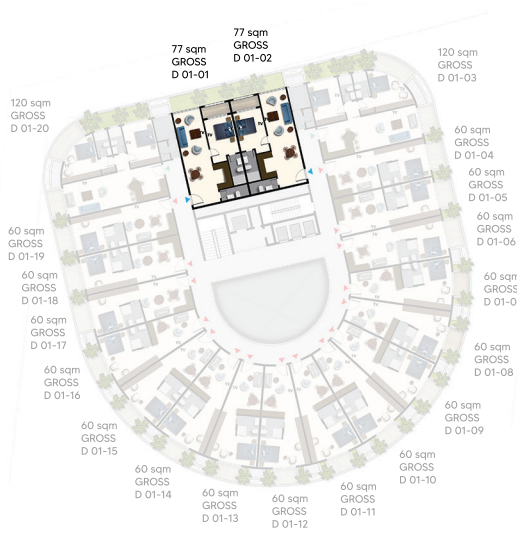


03rd Floor

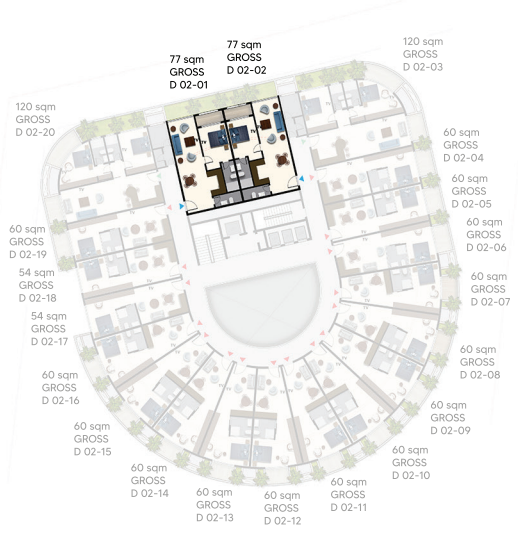


04th Floor

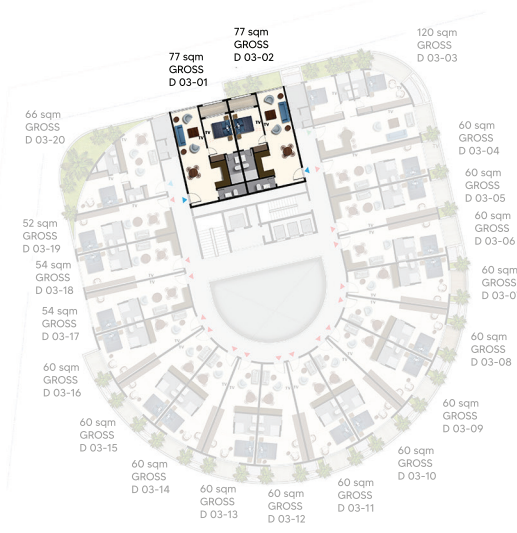
1-BEDROOM APARTMENT 77 SQM GROSS
Total apartments: 08 Units



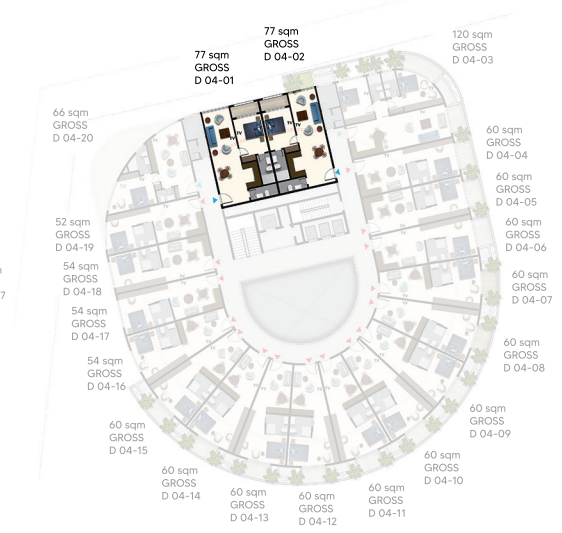
01st Floor



02nd Floor



03rd Floor



04th Floor

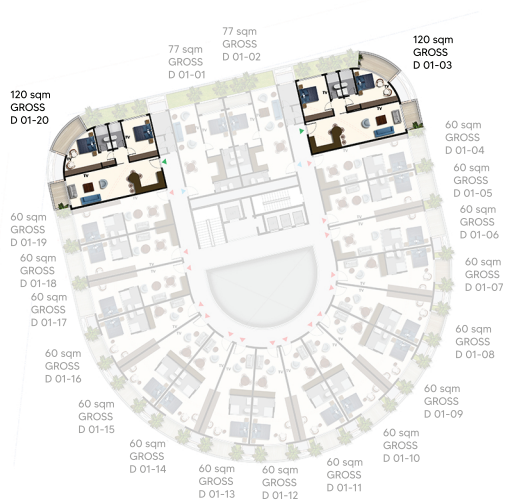
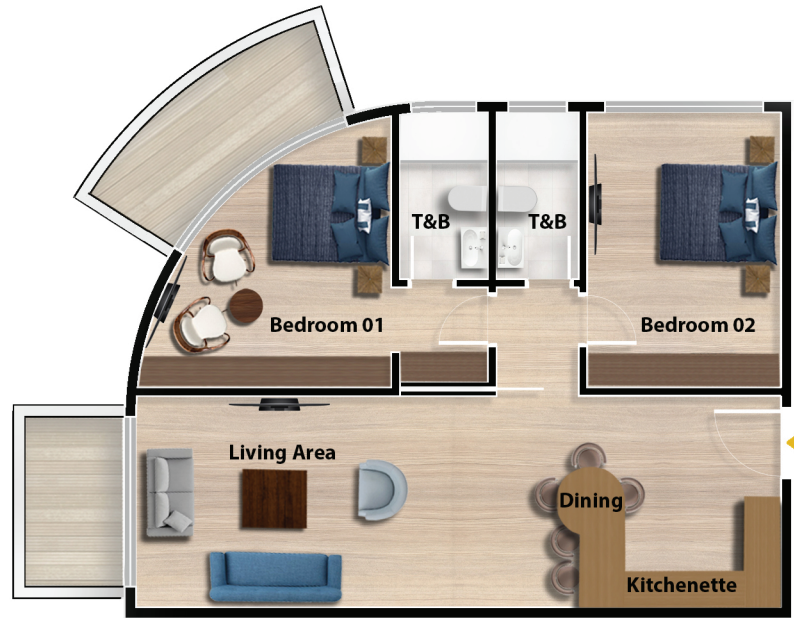


2-Bedroom Apartments

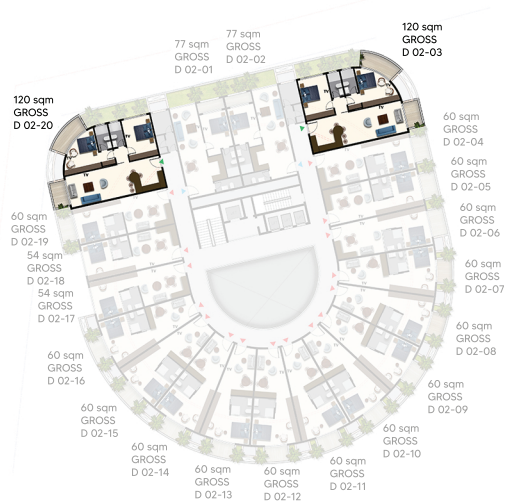
Welcome to spacious luxury living in our 2-bedroom apartments, where modern aesthetics and ample room combine to create a haven of relaxation and style.

2-BEDROOM APARTMENT 120 SQM GROSS

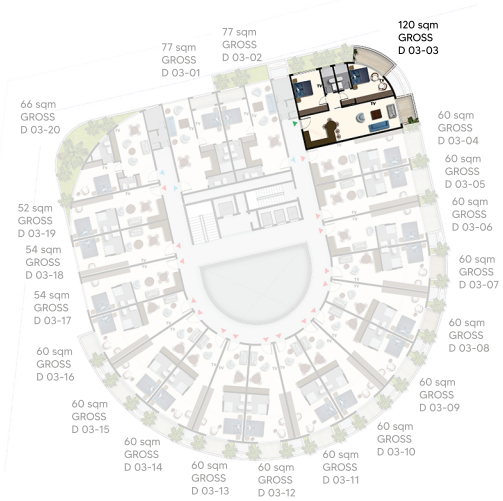
Total apartments: 06 Units



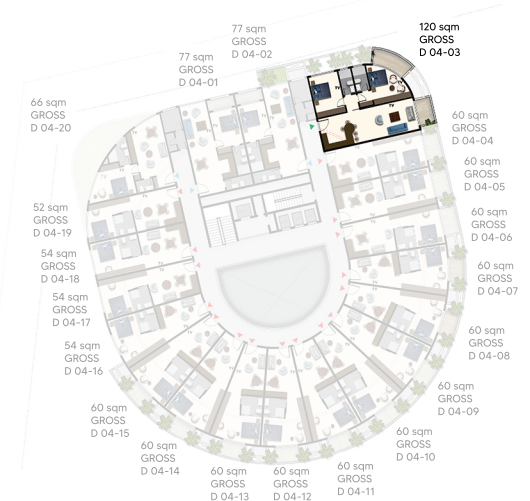
01st Floor



02nd Floor



03rd Floor



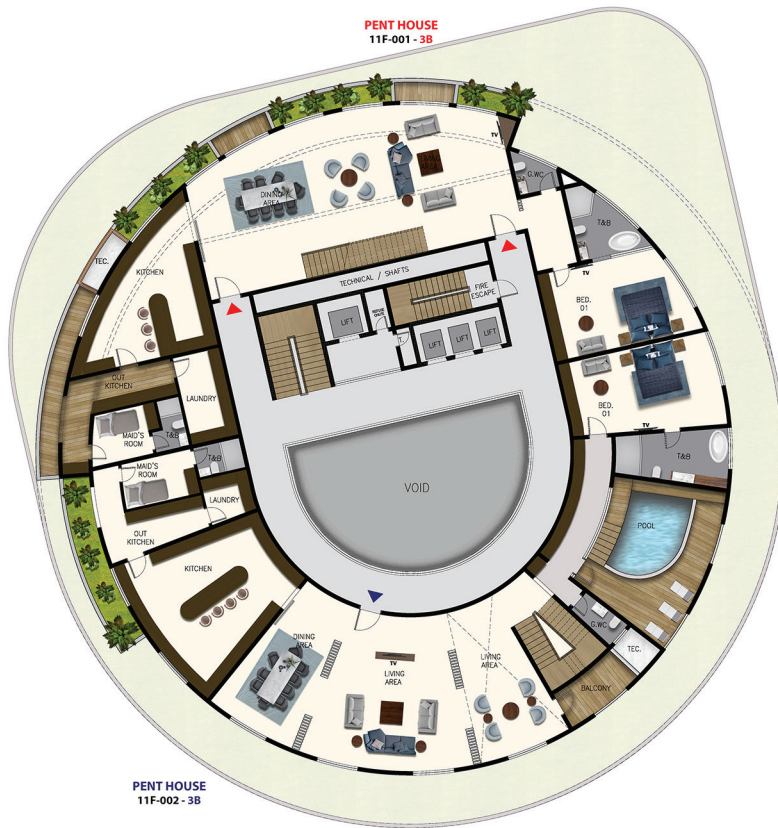
04th Floor



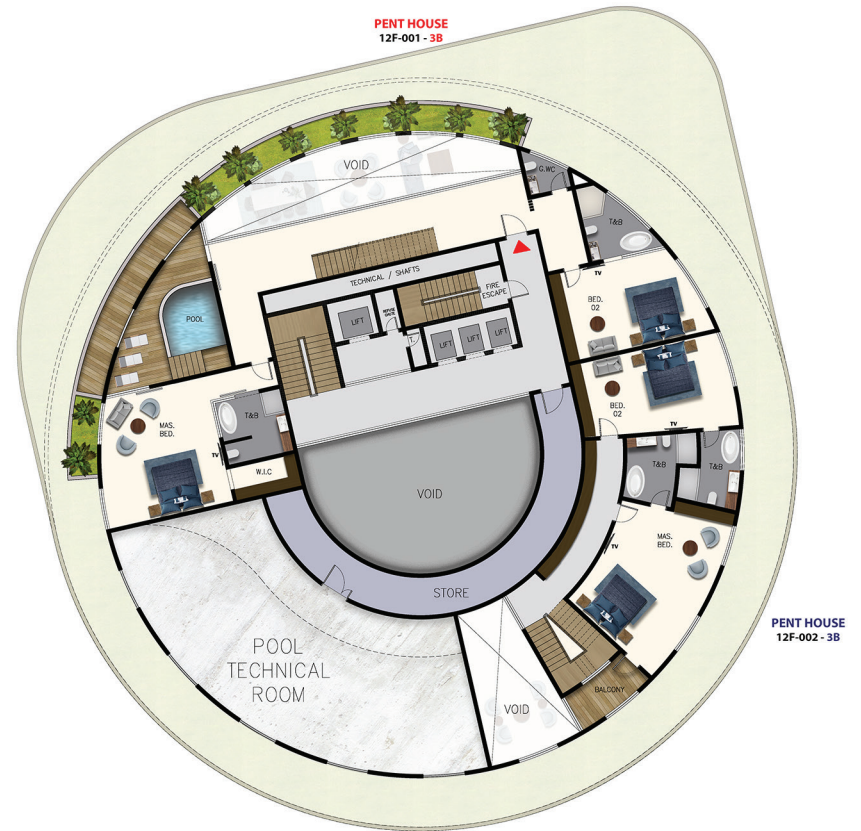
Royal Penthouses

Crowning the residential offering at Prestige are the two Royal Penthouses, designed for the ultimate luxury lifestyle. Each has a floor plan ready to be tailored to your exact needs and requirements, elevating your home to the space of your dreams.

PENTHOUSE APARTMENT
Total apartments: 02 Units



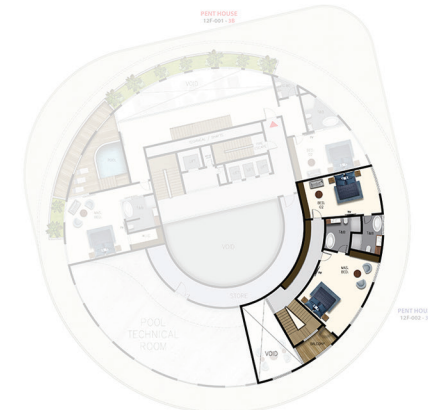
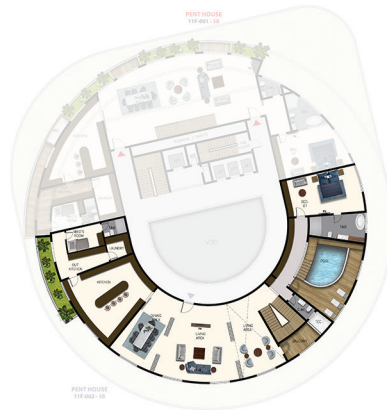
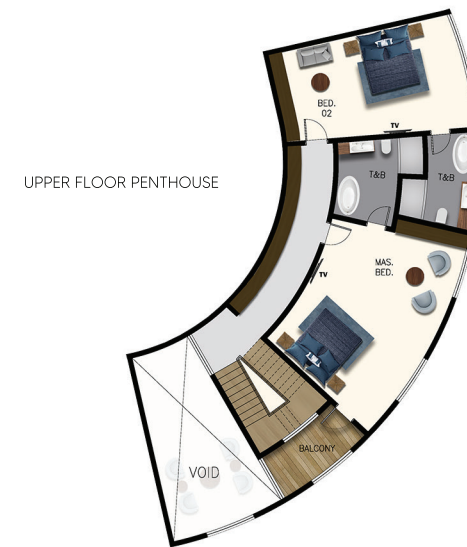
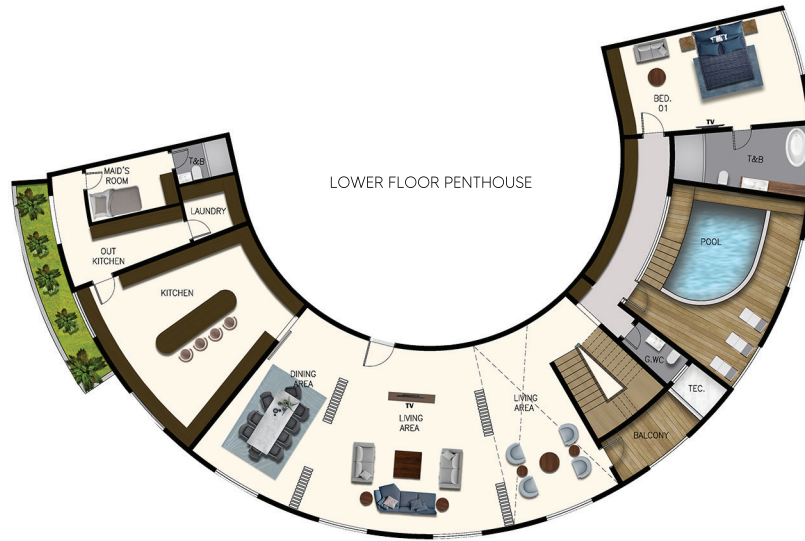
11th Floor



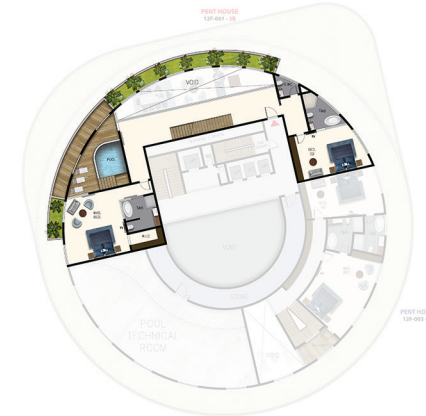
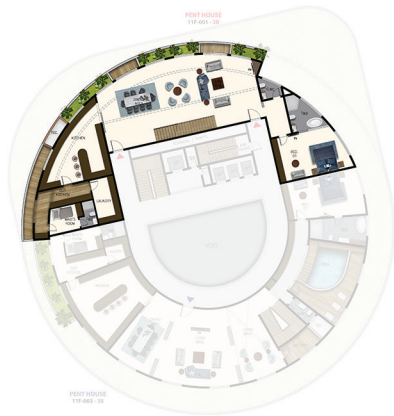
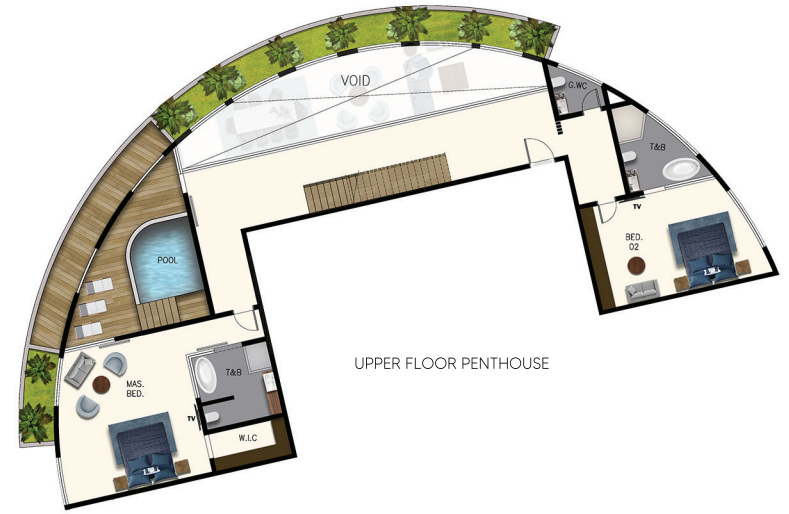
12th Floor

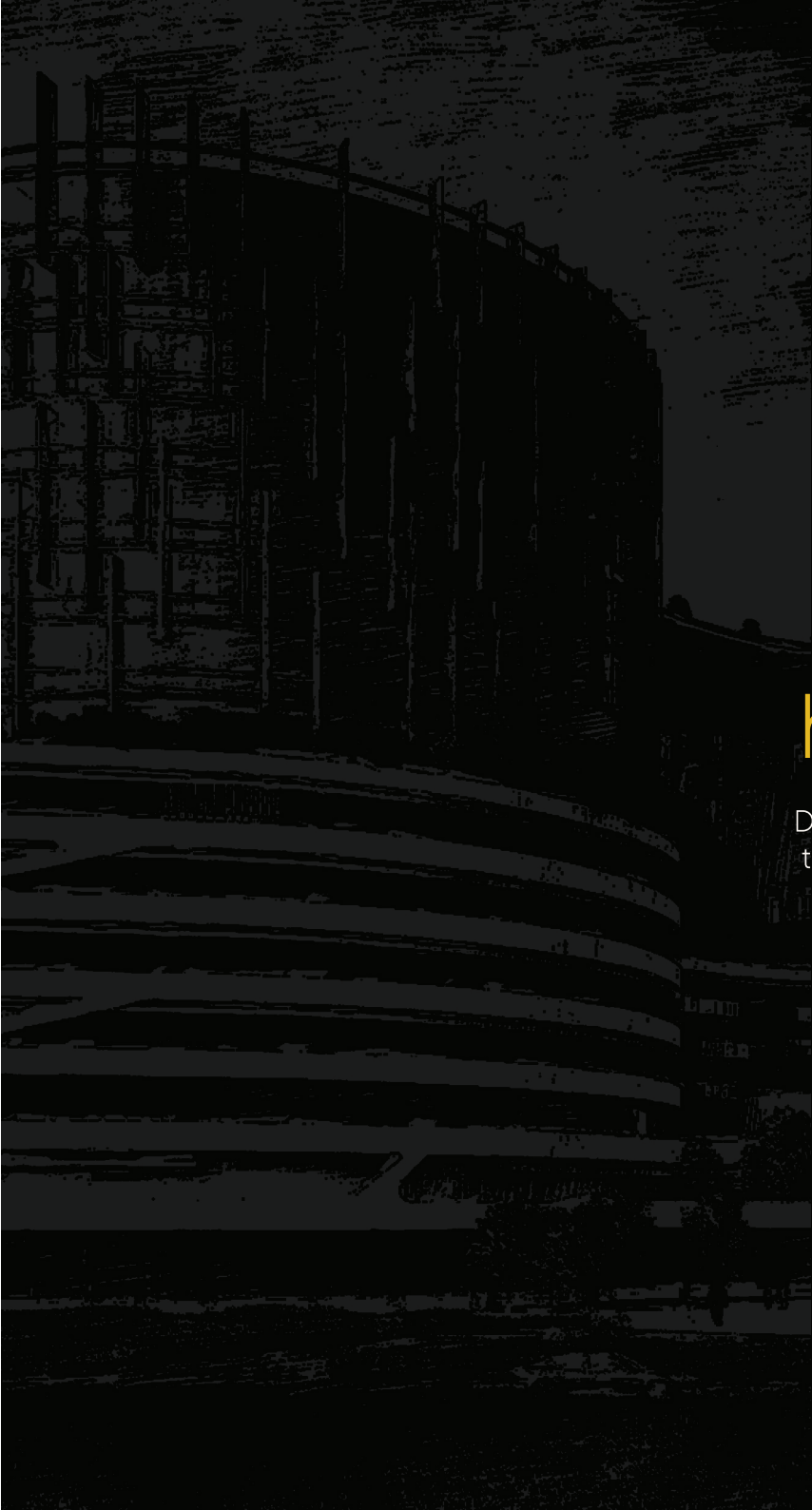
PENTHOUSE APARTMENT 664 SQM GROSS

Total apartments: 01 Unit



PENTHOUSE APARTMENT 679 SQM GROSS
Total apartments: 01 Unit





Because your dream home awaits.

Don't miss your opportunity to discover
the ultimate luxury lifestyle at the city's
most desirable address.

Your luxury lifestyle at Prestige is only one call away.
Contact our dedicated sales team today on **0553121212**





I2 Development Ghana LTD
+233 553 121212
enquiries@i2development.com
Marina Mall, Plots No. 11 & 13 Airport City Accra, Ghana
Office Tower, 4th Floor, Office 4D
Ghana Post GPS Code: GL-126-7517
www.i2development.com